

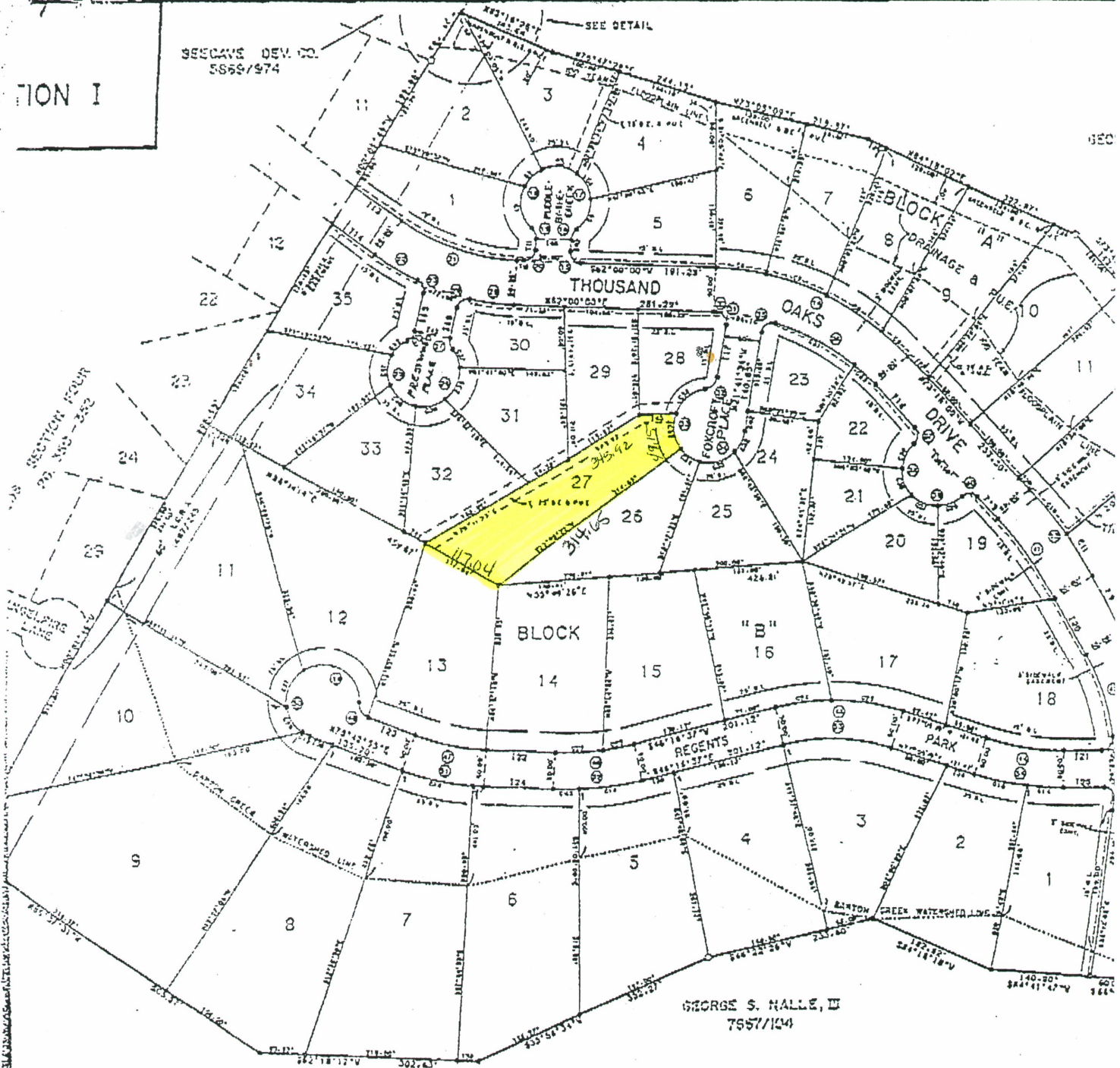
Lot Size 85x348

31-83 RCCHA 3680 \*20.00

SECTION I

SEECANE DEV. CO.  
5858/974

SEE DETAIL



GEORGE S. HALL, III  
7957/104

GEORGE S. HALL, III  
7957/104

ESPEY, HUST  
Engineering & S  
316 CAPITAL OF T  
RD. BOX 219

CS

